



# GMT MONTHLY MEMBERSHIP PROGRESS REPORT

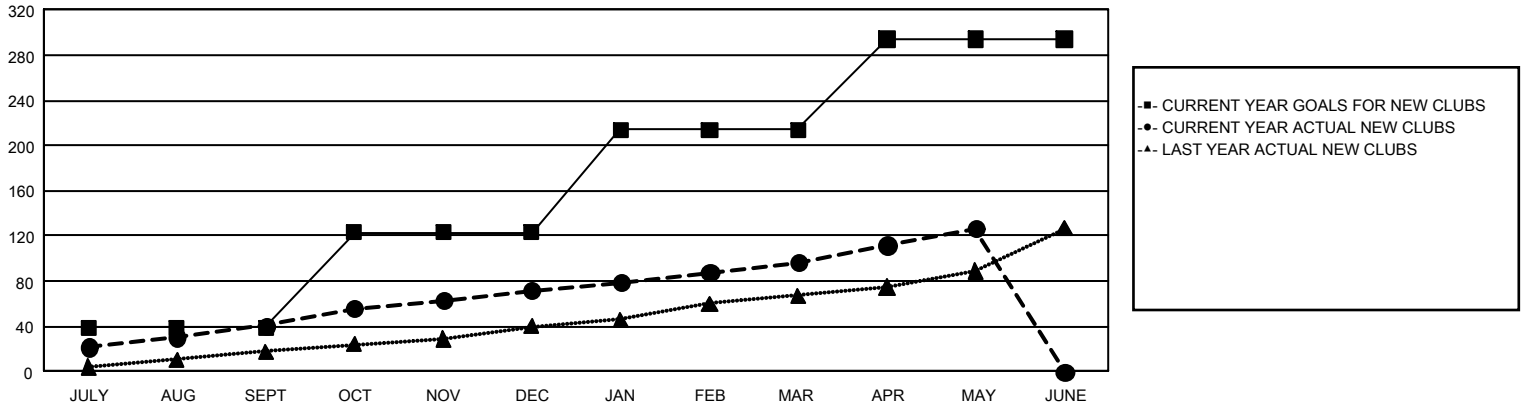
## GAT Constitutional Area 1

Results as of: 5/31/2026

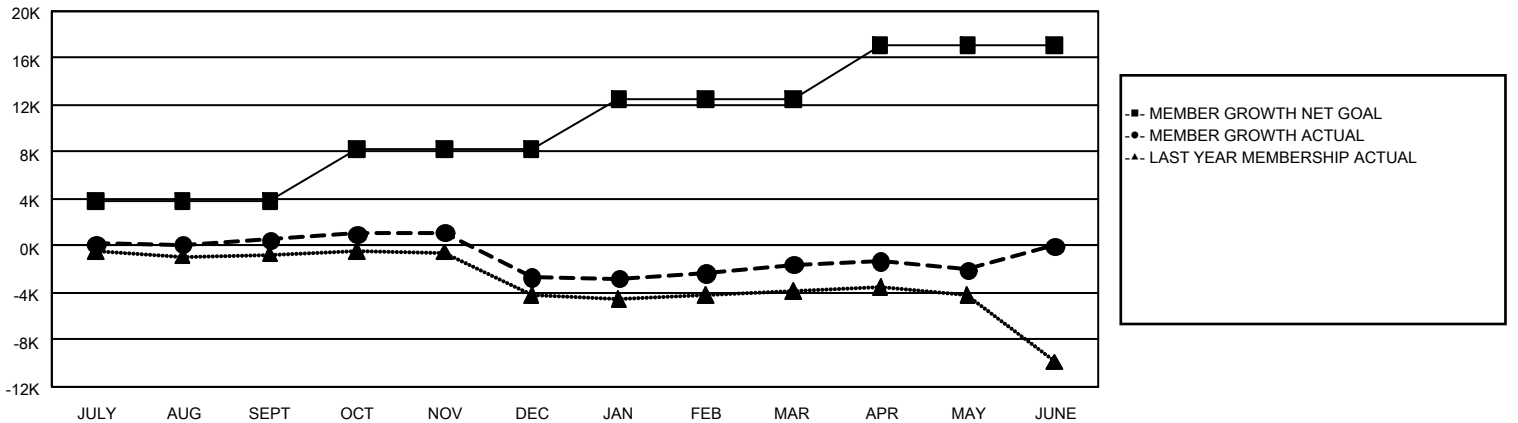
REPORT DOES NOT INCLUDE CLUBS IN UNDISTRICTED AREAS.

Clubs				Members			
RESULTS FOR 2025-2026				RESULTS FOR 2025-2026			
QUARTER	NEW CLUB GOAL	NEW CLUBS	DROPPED CLUBS	QUARTER	MEMBER GROWTH NET GOAL	MEMBER GROWTH ACTUAL	DROPPED MEMBERS ACTUAL (including transfers)
JULY/AUG/SEPT	39	41	47	JULY/AUG/SEPT	3,826	8,530	6,836
OCT/NOV/DEC	84	31	111	OCT/NOV/DEC	4,377	6,841	9,347
JAN/FEB/MAR	91	25	31	JAN/FEB/MAR	4,318	8,019	5,931
APR/MAY/JUNE	80	30	18	APR/MAY/JUNE	4,558	5,090	4,989

GOALS AND ACTUAL NEW CLUBS CUMULATIVE



GOALS AND ACTUAL MEMBERS CUMULATIVE



DROPPED CLUBS: 207

5,694 CLUBS OF 9,826 ADDED 1 OR MORE NEW MEMBERS

GENDER DISTRIBUTION

MALE 157,507 (61.52%)  
FEMALE 98,291 (38.39%)

DROPPED MEMBERS

DECEASED	3,510
CLUB CANCELLED	1,239
OTHER	22,297
<b>TOTAL</b>	<b>27,046</b>

[CLICK HERE FOR CUMULATIVE MEMBERSHIP DATA](#)

TOTAL FAMILY UNIT MEMBERS	49,972
FAMILY MEMBERS PAYING HALF DUES	25,690